

West Side Stories

Western Sussex (DE) Affiliate



empowering women since 1881

Drug Crime & Addiction in Our Community

It was an informative evening at our March dinner meeting as Detective Eric Chambers, one of 28 police officers on the Seaford Police Force, came and spoke to our membership about the drugs infiltrating our community. Eric, who has 15 years with the department; 13 of those years as a detective in the Crime Division, is one of 2 detectives who regularly works major case in Seaford—most revolving around drugs and the drug trade. Eric's talk revolved around the Heroin epidemic that is not exclusive to Seaford, but is quite rampant across this nation, especially in small towns. He stated that currently, Seaford experiences around 15,000 (yes, thousands) of complaints/calls in a year's time. Heroin, and pain-killer related drugs is the largest problem seen. This includes increasing cases which involve heroin cut with the potentially deadly drug Fentanyl. Fentanyl, belongs to a class of drugs known as opioids. When used under the direction of a physician as a medical treatment for ongoing pain relief during cases of cancer, chronic pain, and other approved treatment courses, it can greatly assist a patient with pain relief. However, when cut with Heroin (another opioid), it becomes a deadly cocktail at a potency level that can kill immediately. Users of these opioids develop tolerances and must increase dosages, which leads to increased amounts in the bloodstream. Cases of overdose and death are growing as this combo drug is becoming more and more available to drug users in our community.

Eric and the Seaford PD has increased their efforts to patrol known areas of drug dealing, use, and activity, however, it's not that easy. Our court system is beleaguered with drug related offenses, and many users and dealers are out on the street within 24 hours of their arrests. Fortunately, Eric's increased presence in the community has led to arrests in other crimes as evidence has been found in connection with unsolved cases.

Eric is originally from Maine, but married a local gal (Ron McArthur's daughter) and relocated to the area.

If you have any questions about the Seaford PD, please contact our member, Leanne Phillips-Lowe who is the SPD commissioner. (She will show you her badge!)



2018

Meeting Dates

May 23

6:00 pm

May

Program

Ged Pearson

SHS Student





SUNSHINE NOTES

For publication in our next newsletter, please send any articles, news items, and Sunshine Notes to Mikki Madden @mikssterlingstyle@gmail.com

Former member Betty Hall made a donation to our scholarship fund to honor member Anne Bleile's "monumental" birthday.

Please remember to keep those members in your prayers and thoughts who are experiencing seasons of grief, illness, recovery, and challenges. Use our membership list to send, call, or email words of encouragement and support if you are so inclined.

"NO ONE IS USELESS IN THIS WORLD WHO LIGHTENS THE BURDENS OF ANOTHER."
-CHARLES DICKENS



Ged Pearson

AAUW Western Sussex Branch is so excited to be concluding our 2017-2018 meetings with entertainment from Ged Pearson.

Ged is the son of George and Amy Pearson and resides in Seaford. He started playing the piano at age 5, began playing trumpet at age 10 and from 5th grade until now, 11th grade, he has basically taught himself how to play 10 instruments. His main instruments however, are piano, clarinet and flute.

Ged serves as drum major for the Seaford High School marching band. He has participated in All State Band, starting in 7th grade through his current year in 11th grade. No doubt he will be in All State Band in his senior year. Not to be outdone, he's also participated in All State Chorus in both 10th and 11th grade as well as All County Band in 7th-11th grade.

One of his finest achievements to date was the Honors Performance Series International Band at Carnegie Hall in February of this year.

Ged has performed in musicals at Seaford Middle School since 5th grade (he had to join the show because one of the boys quit the week of the show and Ged had been to every practice since Amy was helping with the show. He had memorized the lines!) He performed in all of the middle school musicals grades 5-8.

At the Seaford High School, he has performed in the past two musicals and will perform in this year's production the weekend of May 3-5th! It would be great to see some AAUW members at the show!

He has played for musical pits at Woodbridge, Seaford and SAAS since 8th grade. He plays piano weekly at King's Church in Laurel and plays, occasionally, for Mt. Olivet bell choir and other services.

To top it off, Ged is the President of his Junior class and next year will be President of Key Club. He is very active in BPA and SGA. He is currently looking for music schools as he starts the college application and audition process in August!





Congratulations to Lisa Tobin on the engagement of her youngest daughter Julia. Lots of planning, love, and memories are in her future!

Thank you to the scholarship committee for all your hard work. From gathering the applications, reading them, reviewing and refining the application review process, interviewing highly qualified candidates, and making the final (and hard) selection of our recipient. You make a difference in the life of a young lady!

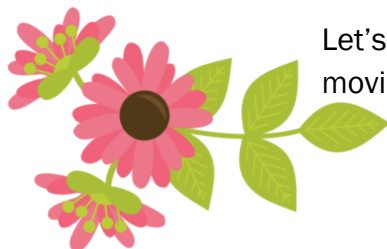
We sold over 2,200 geraniums this year to benefit our scholarship fund!



We currently have 36 members (updated in our directory in March) in our Wester Sussex branch.

While this is a great group of ladies, we will always need to expanding our membership in order to continue our scholarship giving. It's a numbers game and we cannot afford to let our numbers drop.

On the next page, please find a membership form. WE EACH will need to complete one for the upcoming year (see Josie if you have questions). PLEASE CONSIDER asking a friend to join. If we each asked one friend, that would DOUBLE our membership. Membership in our branch is easy. Meetings every other month are very doable for busy ladies like ourselves, as are selling and working the geranium sale and yearly raffle program. Attending dinner meetings are NOT a requirement, but are a great way to connect and learn.



Let's keep this great branch growing and moving forward as a needed support for our community!

TREASURER'S REPORT MARCH 2018

Operating Expenses Acct:

Beg. Bal. = **\$1573.43**

Income = **\$224.00**

Nov. Dinner = \$224.00

Dues = \$0

Expenses = **\$220.15**

Manor House = \$220.15

**Ending Balance =
\$1577.28**

Scholarship Account:

Beg. Bal = \$5145.68

Income = \$0.83(interest)

Raffle = \$50.00

TOTAL = \$50.83

Expenses = **\$0.00**

**Ending Balance =
\$5196.51**

Respectfully Submitted:

Ellen Wright

Treasurer





President's Message

May 2018 Presidents Address

What a great day we had for our annual geranium sale! We have experienced all kinds of weather over the years but this year it was warm and sunny, and I even got a little sunburned by accident. Pat had everything organized and we had a lot of members and two students helping us with the orders. By noon there were only 11 plants left and they were sold later that day. Thank you to all the members who sold plants and/or helped that day. The profits will benefit our scholarship fund.

Speaking of scholarships, Lisa and the scholarship committee has been working on updating our application and interview process. We received a good number of applications for the high school scholarship and will be interviewing the top applicants this week. We will be inviting the recipient to our May meeting, so you will have the opportunity to meet her.

I have been forwarding some emails from national AAUW to you which you should also have received directly from national to your email. The first was asking your input on a survey regarding the AAUW strategic plan. The second was a reminder to vote in the AAUW election. Voting is open from April 25 to June 9. You can vote online using your member ID and PIN which was emailed to you with the digital version of Outlook magazine or on the mailing label of the print edition. A paper ballot and envelope were included in the print version of Outlook.

There are several proposed bylaw amendments on the ballot. You can read in more detail about each of these at aauw.org or in Outlook prior to voting.

Proposal 1: Shall AAUW implement a staggered-term model for the AAUW Board of Directors that includes directors serving for three years per term, with four elected and one appointed each year?

Proposal 2: Shall the AAUW Bylaws be amended to allow up to five nonmembers of AAUW to be members of the AAUW Board of Directors?

Proposal 3: Shall the AAUW Bylaws be amended to eliminate the degree requirement for membership in AAUW?

At our last meeting, a question came up about the national dues increase. The following information is also from the national website. "The AAUW Board of Directors voted in June 2017 to enact the first dues change in almost a decade. Effective March 16, 2018, national dues will increase from \$49 to \$59. Annual dues currently account for 13 percent of AAUW's annual budget. They help to sustain and grow AAUW's programs and work that advances equity for women and girls. A combination of dues, donations, and corporate and foundation funding is critical to supporting AAUW's salary negotiation workshops, groundbreaking research, advocacy efforts, campus leadership programs, and so much more. We believe we can do great things together and thank you for your continued support."

There was also a question regarding what national AAUW does for the branches. The branches exist to support and promote the mission and goals of the national organization at the community level. The mission of AAUW is "advancing equity for women and girls through advocacy, education, philanthropy, and research." In order to help branches support this mission, national provides us with member leadership programs, guidelines to promote stem education, salary negotiations workshops, and campus initiatives. AAUW can also be a source for guest speakers, education funding, legal case support, research, and a public policy agenda on which we can base our branch activities.

We hope that you will renew your membership in our branch of AAUW. Your membership and participation will help us to accomplish more for women and girls in our community. Please also consider helping on a committee or taking a role on the board. Josie and I have both been on the board for several terms and it would be nice to have new faces and ideas.

Joyce

SPRING Safety Tips

Spring is a great time of year. The rebirth of growth, the warmer weather, and the promise of fresh fruits and veggies make it a favorite for season from many. However, spring can also lead to some pitfalls and dangers if we are not careful.

As we are “Spring Cleaning,” take a few helpful hints from this list to make your season as safe as possible.

MEDICATIONS: Take the time to check each and every OTC and store bought vitamin, medicine, and prescription for expiration dates. Discard prescription medications at your nearest pharmacy; they will either take or give you information about disposal. Purchase replacements while at your pharmacy.

Another help is to have a list of ALL the medications you take, including time you take as well as amount, color, prescribing doctors, and strength. It's good to give a copy to a trusted family member.

BATHROOMS: Check or install safety bars, non-slip mats, and night-lights in your bathrooms. Our bathrooms can be one of the most dangerous places due to hard slippery surfaces and distance from phones.

BEDROOMS: Install a night-light for ease of movement. Make sure you can easily turn the bedside light on and off (this avoids side falls from the bed). Is your bed a height where you can easily sit and your feet are fully flat on the floor? Getting up and down should be attainable, even if you have a cane or walker for assistance. If you have items stored high on shelves, or low under the bed, remember to ask for help when retrieving these items, falls and stoops are very common household accidents.

KITCHEN: You should always have an emergency contact list near your phone or on the refrigerator. **MAKE SURE IT IS UPDATED AND CORRECT.** Make sure that your appliances are in good working order and that filters and backs are free from debris and dust. Make sure drains are working, and free from clogs. Work with a friend or family member to vacuum filters and below and behind appliances. Or...hire that job out to a bonded cleaning company. It's money well spent for one time a year!

GENERAL: Make sure you change the batteries in all smoke and CO2 detectors. Check that all furniture is sturdy, repairing any wobbly legs or loose fittings. Floors should be free of tripping hazards like high carpet edges, raveling seams, and slippery rugs.

OUTSIDE: Sturdy railings or hand-holds should be available when stepping in or out of the house. Steps should be clear of items that could cause tripping hazards; snow and ice aren't the only seasonal worries. Outside lights should have their bulbs replaced for the season.

Take the time to make your spring a season of joy, happiness, and health!



Western Sussex Branch AAUW

Leading women in Western Sussex County since 1940

2018-2019 Membership Form

Renewing Member: _____ New Member: _____ Recruited by: _____

Date: _____

As you join the Western Sussex Branch AAUW, make a commitment to the Board to be an active member of the organization. Participation provides the opportunity to network with other professional women from all walks of life and to attend informative and interesting programs.

Please complete this form and return it with your dues to Josie Hunsberger, our branch membership vice president. Please make checks payable to **Western Sussex AAUW**.

PLEASE NOTE: NO INCREASE IN DUES!

Dues

Association \$59.00

State \$6.00

Branch \$5.00

Total \$70.00

Send dues to:

Josie Hunsberger

33 Rivers End Drive

Seaford, DE 19973

302-236-4873 cell

Tax deductible information: AAUW national dues are \$59.00, of which \$56.00 is tax deductible by the individual member; \$3.00 of that national dues payment is not tax deductible because it will be used to support the AAUW Action Fund's Section 501(c)(4) activities (Lobby Corps and election-related activities).

Please supply the following information.

NAME: _____

ADDRESS: _____

CITY: _____ STATE: _____ ZIP: _____

PHONE NUMBERS: HOME: _____ CELL: _____

WORK: _____

E-MAIL ADDRESS: _____

Is there a seasonal address? Please write in the address and dates applicable:

COLLEGE/UNIVERSITY ATTENDED _____

DEGREE & DATE RECEIVED _____

NEWSLETTER MAILINGS

I would like to receive my newsletters by (please circle one):

- a. Email at the above address
- b. Post Office Mail at the above address
- c. Post Office Mail at the seasonal address

TRANSPORTATION

I would like to have transportation to meetings. YES NO

I am able to provide transportation for a member who needs it. YES NO

MEMBER PARTICIPATION

Please indicate in which committees or activities you would like to participate. Each branch member should participate in at least one branch committee or activity.

- _____ Scholarships
- _____ Phone Tree
- _____ School Board Candidate Forum
- _____ Geranium Fundraiser
- _____ Book Group
- _____ Program Planning
- _____ Publicity
- _____ Public Policy
- _____ Sunshine

TENTATIVE CALENDAR

Board meetings: second Tuesday of every month (subject to change); dinner meetings: fourth Wednesday; interest groups: Book Club Meetings TBA

September	Dinner Meeting and Program w/ Del Tech Scholarship Winner
November	Dinner Meeting and Program
January	Dinner Meeting and Program
March	Dinner Meeting and Program
April	Geranium Sale
	Scholarship Selection Meetings
	School Board Candidate Forum
May	Annual Dinner Meeting and Program w/ High School Scholarship Winner





AAUW IS A TOP-RATED CHARITY, COMMITTED TO SERVING WOMEN AND CHILDREN



STATE AAUW INFORMATION:

The Delaware AAUW website has a variety of information that is helpful to membership.

You can access the website at:

<http://aauw-de.aauw.net/>



Check out our updated page on the state site!

MAY MENU:

\$14.00 for your meal

Preset tossed salad

Chicken Marsala

Tilapia topped with Crab Meat

Fresh Asparagus

Zucchini & Squash Combo

Key Lime Pie

Nancy's Chocolate Dessert Surprise

Coffee, Tea, Water



Please RSVP for dinner (by May 16) to Shirley Blackwell at 629-8806 or blackwell629@comcast.net. Please let Shirley know if you will be bringing a guest.

fyi.



"If we don't gather and preserve history, it's all going to be lost."

—Erie Sauder

The Woodland School House Association is in the process of restoring and preserving the one room school house in Woodland, DE located on the Sussex County Park in Woodland. The association plans to use the site for historical and environmental studies in the fall of this year.

The group is welcoming donations of any amount, which would go directly to the association for restoration. This will complete Phase 1 of the project.

The restored school house will be the cornerstone of the Woodland Park, and will house artifacts from the time when it served students. The association wants to maintain the balance of history in the area along with the school house.

For more information contact:

Karl Steinbiss, President
at The Woodland School House Association
P O BOX 511, Seaford, DE 19973 or at 302-629-8528